





14.0

**Membrane RO - NF - UF
Containers and
accessories**

14.1 REVERSE OSMOSIS & NANO FILTRATION MEMBRANES 349

SUEZ MEMBRANES 349

MEMBRANA LOW PRESSURE & EXTRA LOW PRESSURE	349
BRACKISH WATER - HIGH REJECTION MEMBRANES	349
MEMBRANA BRACKISH WATER - HIGH REJECTION LOW FOULING	350
MEMBRANA SEA WATER	350
NANOFILTRATION MEMBRANE	350

SUEZ ULTRAFILTRATION MODULES 350

ZEEWEED UF SYSTEM MEMBRANE - HOLLOW FIBER	350
---	-----

SUEZ EDI STACKS ULTRAFILTRATION MODULES 350

INDUSTRIAL ELECTRODEIONIZATION (EDI) STACKS	350
---	-----

MEMBRANE HYDRANAUTICS 351

MEMBRANE ESPA - LOW ENERGY MEMBRANES	351
MEMBRANE CPA - HIGH REJECTION MEMBRANES	351
MEMBRANE LFC - LOW FOULING MEMBRANES	351
MEMBRANE ESNA - ENERGY SAVING NANOFILTRATION MEMBRANE	352
SWC - SEA WATER MEMBRANES	352
HYDRANAUTICS SPARE PARTS	352

HYDRANAUTICS ULTRAFILTRATION MODULES 353

HYDRACAP ULTRAFILTRATION MODULES	353
HYDRACAP MAX ULTRAFILTRATION MODULES	353
SPARE FOR ULTRAFILTRATION	353

HYDROPRO MEMBRANES 354

RESIDENTIAL MEMBRANES	354
COMMERCIAL MEMBRANES	354
INDUSTRIAL MEMBRANES	354
SW MEMBRANES	354
MEMBRANE FILMTEC	354
ASPRING MEMBRANES	354

14.2 GLASS FIBRE VESSELS FOR MEMBRANES 355

VESSEL FOR 2" 1/2" MEMBRANES 355

300 PSI	355
600 PSI	355
1000 PSI	355

4" END PORT MEMBRANE VESSEL	356
300 PSI	356
450 PSI	356
600 PSI	356
1000 PSI	356
1200 PSI	356
4" SIDE PORT MEMBRANES	357
300 PSI	357
450 PSI	357
600 PSI	357
1000 PSI	357
1200 PSI	357
8" END PORT MEMBRANES	358
300 PSI	358
450 PSI	358
600 PSI	358
1000 PSI	358
1200 PSI	358
8" SIDE PORT MEMBRANES	358
300 PSI	358
450 PSI	358
600 PSI	358
1000 PSI	358
1200 PSI	360
FIBREGLASS VESSEL ACCESSORIES	360
LOGS	360
GROOVED JOINTS 500 PSI	360
VICTAULIC SPLINED JOINTS 1000 PSI	360
ORIGINAL	361

14.3 AISI 316L MEMBRANE VESSEL **362**

2 1/2" MEMBRANES	362
250 PSI MOPLEN CAPS	362
4" MEMBRANES	362
250 PSI MOPLEN CAPS	362

250 PSI WITH CLAMP AND MOULDED PLUGS	362
600 PSI WITH AISI 316L CAPS	363
1000 PSI SIDE PORT 180° VICTAULIC	363
400 PSI END PORT VICTAULIC 1" 1/2	363
400 PSI SIDE PORT VICTAULIC 1" 1/2	364

VESSEL SPARE PARTS 365

FOR VESSEL 2" 1/2	365
FOR VESSEL 4"	365
FOR VESSEL 8"	365

14.4 PLASTIC MEMBRANE VESSELS 366

PLASTIC VESSEL 366

FOR MEMBRANES 1812 150 PSI	366
FOR MEMBRANES 3012	366
FOR MEMBRANES 3208 & 3308	366

14.1 REVERSE OSMOSIS & NANO FILTRATION MEMBRANES

SUEZ MEMBRANES

MEMBRANA LOW PRESSURE & EXTRA LOW PRESSURE

2,5

Code	Description	Permeate flow rate (gpd)/(m ³ /g)	Minimum rejection	€
GEAK25005	Membrane Ro Low Pressure AK2521TM	300/1,14 (GDP/m ³ /d)	99,0%	
GEAK25010	Membrane Ro Low Pressure AK2540TM	710/2,7 (GDP/m ³ /d)	99,0%	

4"

Code	Description	Permeate flow rate (gpd)/(m ³ /g)	Minimum rejection	€
GEAK40005	Membrane Ro Low Pressure AK4021TM	1050/3,9 (GDP/m ³ /d)	99,0%	
GEAK40010	Membrane Ro Low Pressure AK4040TM	2200/8,3 (GDP/m ³ /d)	99,0%	
GEAK40020	Membrane Ro Low Pressure AK-90	2200/8,3 (GDP/m ³ /d)	99,5%	
GEAK40030	Ro Low Pressure AK-90 LE membrane	2800/10,6 (GDP/m ³ /d)	99,3%	
GEAP40020	Membrane Ro Extra Low Pressure AP-90	2400/10,2 (GDP/m ³ /d)	95,0%	
GEAP40022	Membrane Ro Low Pressure AK4040FM	2400/9,1 (GDP/m ³ /d)	99,5%	

8"

Code	Description	Permeate flow rate (gpd)/(m ³ /g)	Minimum rejection	€
GEAK80030	Membrane Ro Low Pressure AK-440	11500/43,5 (GDP/m ³ /d)	99,5%	
GEAK80040	Ro Low Pressure Membrane AK-400 LE, 34	12300/46,6 (GDP/m ³ /d)	99,3%	
GEAP80020	Membrane Ro Extra Low Pressure AP-400	12500/47,2 (GDP/m ³ /d)	95,0%	
GEAK80026	Membrane Ro Low Pressure AK-400 H	11000/41,6 (GDP/m ³ /d)	6%	
GEAK80027	Membrane Ro Low Pressure AK-440 H	12000/45,4 (GDP/m ³ /d)	6%	
GEAK80021	Membrane Ro Low Pressure AK8040F-400	11000/41,6 (GDP/m ³ /d)	99,9%	
GEAK80022	Membrane Ro Low Pressure AK8040F-440	12000/45,4 (GDP/m ³ /d)	99,9%	

BRACKISH WATER - HIGH REJECTION MEMBRANES

4"

Code	Description	Permeate flow rate (gpd)/(m ³ /g)	Minimum rejection	€
GEAG40020	Membrane RO Brackish Water AG-90	2200/8,3 (GDP/m ³ /d)	99,8%	
GEAG40022	Membrane RO Brackish AG4040FM	2400/9,1 (GDP/m ³ /d)	99,5%	

8"

Code	Description	Permeate flow rate (gpd)/(m ³ /g)	Minimum rejection	€
GEAG80025	Membrane RO Brackish Water AG-400, 34	10500/39,7 (GDP/m ³ /d)	99,8%	
GEAG80030	Membrane RO Brackish Water AG-440	11500/43,5 (GDP/m ³ /d)	99,8%	
GEAG80022	Membrane RO Brackish AG-400 H	11000/41,6 (GDP/m ³ /d)	99,8%	
GEAG80024	Membrane RO Brackish AG-440 H	12000/45,4 (GDP/m ³ /d)	99,8%	
GEAG80023	Membrane RO Brackish AG8040F-400	11000/41,6 (GDP/m ³ /d)	99,5%	
GEAG80032	Membrane RO Brackish AG8040F-440	12000/45,4 (GDP/m ³ /d)	99,5%	
GEAG80026	Membrane RO Brackish AG-400 LE H	10000/37,9 (GDP/m ³ /d)	99,5%	
GEAG80028	Membrane RO Brackish AG-440 LE H	11000/41,6 (GDP/m ³ /d)	99,5%	
GEAG80029	Membrane RO Brackish AG8040F 400 LE	8500/32,2 (GDP/m ³ /d)	98,5%	
GEAG80031	Membrane RO Brackish AG8040F 440 LE	9100/34,5 (GDP/m ³ /d)	98,5%	

MEMBRANA BRACKISH WATER - HIGH REJECTION LOW FOULING

4"				
Code	Description	Permeate flow rate (gpd)/(m3/g)	Minimum rejection	€
GEAG40023	Membrane RO BW Low Fouling AG4040FM FR,34	2400/9,1 (GDP/m ³ /d)	99,5%	

8"				
Code	Description	Permeate flow rate (gpd)/(m3/g)	Minimum rejection	€
GEAG80046	Membrane RO Brackish AG-400 FR-H	11000/41,6 (GDP/m ³ /d)	99,8%	
GEAG80047	Membrane RO Brackish AG8040F-400 FR,34	11000/41,6 (GDP/m ³ /d)	99,8%	

MEMBRANA SEA WATER

4"				
Code	Description	Permeate flow rate (gpd)/(m3/g)	Minimum rejection	€
GEAE40020	RO Sea Water AE-90 membrane	2000/7,6 (GDP/m ³ /d)	99,8%	
GEAD40020	Membrane RO Sea Water AD-90	1500/5,7 (GDP/m ³ /d)	99,75%	

8"				
Code	Description	Permeate flow rate (gpd)/(m3/g)	Minimum rejection	€
GEAE80025	RO Sea Water AE-400 membrane, 34	9000/34,1 (GDP/m ³ /d)	99,8%	
GEAE80030	RO Sea Water AE-440 membrane	9900/37,5 (GDP/m ³ /d)	99,8%	
GEAD80025	Membrane RO Sea Water AD-400, 34	6500/24,6 (GDP/m ³ /d)	99,8%	
GEAD80030	Membrane RO Sea Water AD-440	7100/26,9 (GDP/m ³ /d)	99,8%	
GEAC40001	RO Sea Water AC-400 membrane,34	5800/21,9 (GDP/m ³ /d)	99,85%	
GEAC40002	Membrane RO Sea Water AC-440	6400/24,2 (GDP/m ³ /d)	99,85%	

NANOFILTRATION MEMBRANE

4"				
Code	Description	Permeate flow rate (gpd)/(m3/g)	Minimum rejection	€
GEHL40010	NF H4040FM membrane	8400/31,8 (GDP/m ³ /d)	92,0%	

8"				
Code	Description	Permeate flow rate (gpd)/(m3/g)	Minimum rejection	€
GEHL80010	NF HL8040F-400 membrane	10500/39,7 (GDP/m ³ /d)	90,0%	

SUEZ ULTRAFILTRATION MODULES ZEEWEED UF SYSTEM MEMBRANE - HOLLOW FIBER

2,5				
Code	Description	Surface area m2/Flow rate l/h	Degree of filtration	€
GEZW700B-250	ZW700B-250 SevenBore PES	at 100 l/m ² h = 60 l/h	< 0,02 µm	
GEZW700B-450	ZW700B-450 SevenBore PES	at 100 l/m ² h = 265 l/h	< 0,02 µm	
GEZW700B-4100	ZW700B-4100 SevenBore PES	at 100 l/m ² h = 580 l/h	< 0,02 µm	
GEZW700B-6100	ZW700B-6100 SevenBore PES	at 100 l/m ² h = 1200 l/h	< 0,02 µm	
GEZW700B-10060	ZW700B-10060 SevenBore PES	at 100 l/m ² h = 6000 l/h	< 0,02 µm	
GEZW700B-10060A	ZW700B-10060 Without headers		< 0,02 µm	
GEZW1500110	ZeeWeed 1500-600 PVDF	at 130 l/m ² h = 7300 l/h	< 0,02 µm	
GEZW1500120	ZeeWeed 1500-RMS PVDF*	at 130 l/m ² h = 7300 l/h	< 0,02 µm	

Included: Vict. clamp, TE fittings, support base.

SUEZ EDI STACKS ULTRAFILTRATION MODULES INDUSTRIAL ELECTRODEIONIZATION (EDI) STACKS

Code	Description	Surface area m2/Flow rate l/h	Degree of filtration	€
---	E-Cell-3X Stack	---	---	
---	E-Cell MK-3 Stack	---	---	

MEMBRANE HYDRANAUTICS

MEMBRANE ESPA - LOW ENERGY MEMBRANES

4 - 4,6

Code	Description	Permeate flow rate (gpd)/(m ³ /g)	Minimum rejection	€
HYE01220	Membrane ESPA1-4040	2600/9,8 (GDP/m ³ /d)	99,3%	
HYE01245	Membrane ESPA2-LD-4040	2000/7,57 (GDP/m ³ /d)	99,6%	
HYE01282	Membrane ESPA4-LD-4040	2350/8,9 (GDP/m ³ /d)	99,6%	

8"

Code	Description	Permeate flow rate (gpd)/(m ³ /g)	Minimum rejection	€
HYE02010	Membrane ESPA1	12000/45,4 (GDP/m ³ /d)	99,2%	
HYE02080	Membrane ESPA2-LD	10000/37,9 (GDP/m ³ /d)	99,6%	
HYE02060	ESPA2 MAX membrane	12000/45,4 (GDP/m ³ /d)	99,6%	
HYE02061	ESPA2-LD MAX membrane	12000/45,4 (GDP/m ³ /d)	99,5%	
HYE02144	Membrane ESPA4-LD	12000/45,4 (GDP/m ³ /d)	99,2%	
HYE02145	ESPA4-LD HP membrane	11000/41,6 (GDP/m ³ /d)	99%	
HYE02142	ESPA4 MAX membrane	13200/50,0 (GDP/m ³ /d)	99,2%	

MEMBRANE CPA - HIGH REJECTION MEMBRANES

4"

Code	Description	Permeate flow rate (gpd)/(m ³ /g)	Minimum rejection	€
HYC01320	Membrane CPA2-4040	2250/8,5 (GDP/m ³ /d)	99,5%	
HYC01380	Membrane CPA5-LD-4040	2100/7,95 (GDP/m ³ /d)	99,7%	
HYC01381	Membrane CPA7-LD-4040	2300/8,71 (GDP/m ³ /d)	99,7%	

8"

Code	Description	Permeate flow rate (gpd)/(m ³ /g)	Minimum rejection	€
HYC02240	CPA3 membrane	11000/41,6 (GDP/m ³ /d)	99,7%	
HYC02340	Membrane CPA5-LD	11000/41,6 (GDP/m ³ /d)	99,7%	
HYC02342	CPA5 MAX membrane	12000/45,5 (GDP/m ³ /d)	99,7%	
HYC02350	Membrane CPA6-LD	8000/30,3 (GDP/m ³ /d)	99,75%	
HYC02352	Membrane CPA6-MAX	8800/33,4 (GDP/m ³ /d)	99,75%	
HYC02360	Membrane CPA7-LD	11500/43,5 (GDP/m ³ /d)	99,80%	
HYC02361	Membrane CPA7-MAX	12600/47,7 (GDP/m ³ /d)	99,70%	

MEMBRANE LFC - LOW FOULING MEMBRANES

4"

Code	Description	Permeate flow rate (gpd)/(m ³ /g)	Minimum rejection	€
HYL06055	Membrane LFC3-LD-4040	2100/7,95 (GDP/m ³ /d)	99,7%	

8"

Code	Description	Permeate flow rate (gpd)/(m ³ /g)	Minimum rejection	€
HYL06060	LFC3-LD membrane	11000/41,6 (GDP/m ³ /d)	99,7%	

MEMBRANE ESNA - ENERGY SAVING NANOFILTRATION MEMBRANE

8"		Permeate flow rate (gpd)/(m ³ /g)	Minimum rejection	€
Code	Description			
HYN02295	Membrane ESNA1-LF2	8400/31,8 (GDP/m ³ /d)	92,0%	
HYN02294	Membrane ESNA1-LF-LD	8400/31,8 (GDP/m ³ /d)	92,0%	
HYN02297	Membrane ESNA1-LF2-LD	10500/39,7 (GDP/m ³ /d)	90,0%	
HYN02296	ESNA4-LD membrane	11500/43,5 (GDP/m ³ /d)	>99,0%	

SWC - SEA WATER MEMBRANES

4"		Permeate flow rate (gpd)/(m ³ /g)	Minimum rejection	€
Code	Description			
HYS013975	Membrane SWC5-LD-4040	625/2,4 (GDP/m ³ /d)	99,4%	

8"		Permeate flow rate (gpd)/(m ³ /g)	Minimum rejection	€
Code	Description			
HYS04120	SWC4+ membrane	6500/24,6 (GDP/m ³ /d)	99,8%	
HYS04155	SWC4-LD membrane	6500/24,6 (GDP/m ³ /d)	99,8%	
HYS04160	SWC4 MAX membrane	7200/27,3 (GDP/m ³ /d)	99,8%	
HYS04260	Membrane SWC5-LD	9000/34,1 (GDP/m ³ /d)	99,8%	
HYS04240	SWC5 MAX membrane	9900/37,5 (GDP/m ³ /d)	99,8%	
HYS042300	Membrane SWC6-LD	12000/45,5 (GDP/m ³ /d)	99,8%	
HYS04320	SWC6 MAX membrane	13200/50,0 (GDP/m ³ /d)	99,8%	

HYDRANAUTICS SPARE PARTS

Code	Description	€
HYZ101850122	O-rings for interconnector 0.75" membrane 4" (single pcs)	
HYZ10187523	O-rings for interconnector 1.125" membrane 8" (kit 20 pcs)	
HYZ11158	External Interconnector 4" (0.75")	
HYZ11518	Internal interconnector 8" (1.125" for low pressure elements)	
HYZ11574	Internal interconnector 8" (1.125" for high pressure element)	
HYZ84473035	U-cup 4" Brine Seal	
HYZ84473040	U-cup 4.6" Brine Seal	
HYZ84473069	U-cup 8" Brine Seal	

HYDRANAUTICS ULTRAFILTRATION MODULES

HYDRACAP ULTRAFILTRATION MODULES

Code	Description	€
HYU80040	HYDRAcap 4040 module	
HYU80021	HYDRAcap40 module	
HYU80025	HYDRAcap60 module	
HYU80030	HYDRAcap80 module	

HYDRACAP MAX ULTRAFILTRATION MODULES

Code	Description	€
HYU80045	Modulo HYDRAcapMAX 4040	
HYU80024	HYDRAcapMAX 40 module	
HYU80029	HYDRAcapMAX 60 module	
HYU80032	HYDRAcapMAX 80 module	

SPARE FOR ULTRAFILTRATION

Code	Description	€
HYZ10185144	Hydracap 8 adapt o ring 144 221A	
HYZ10185220	Hydracap 8 adapt o ring22 228A	
HYZ10185875	Hydracap 8 endcap O-ring 875 acs 1549	
HYZ11536000	Hydracap 8 End Cap Ported	
HYZ11537000	End Cap Non Ported	
HYZ11541100	Hydracap 8 metal clamp	
HYZ11546100	Hydracap 8 product end adapt	
HYZ11547100	Hydracap 8 plug adapt	
HYZ11612000	Hydracap 8 repair pin6	

HYDROPRO MEMBRANES

RESIDENTIAL MEMBRANES

HIGH REJECTION

Code	Description	Size	GPD	Rejection %	Pressure	€
O1021780H1	Hydropro osmosis membrane	1812	50	98	65 PSI	
O1021782H1	Hydropro osmosis membrane	1812	75	98	80 PSI	
O1021784H1	Hydropro osmosis membrane	1812	100	98	80 PSI	
O1021786H1	Hydropro osmosis membrane	1812	150	97	80 PSI	
O1021787H1	Hydropro osmosis membrane	1812	200	97	80 PSI	
O1021788H1	Hydropro osmosis membrane	1812	250	97	80 PSI	
O1021789H1	Hydropro osmosis membrane	3012	300	97	90 PSI	

COMMERCIAL MEMBRANES

Code	Description	Permeate flow rate (gpd)/(m3/g)	Minimum rejection	€
O1021800	BW-RO-2521-UPL	350 /1,30 (GDP/m ³ /d)	99 %	
O1021801	TW-RO-2540-XLP	700 /2,84 (GDP/m ³ /d)	99 %	
O1021802	BW-RO-2540-UPL	700 /2,84 (GDP/m ³ /d)	99 %	
O1021804	BW-RO-4021-UPL	1000 /3,80 (GDP/m ³ /d)	99 %	
O1021805	TW-RO-4040-XLP	2400 /9,10 (GDP/m ³ /d)	99,3 %	
O1021806	BW-RO-4040-UPL21	2400 /9,10 (GDP/m ³ /d)	99,3 %	
O1021808	BW-RO-4040-LP21	2400 /9,10 (GDP/m ³ /d)	99,5 %	

INDUSTRIAL MEMBRANES

Code	Description	Permeate flow rate (gpd)/(m3/g)	Minimum rejection	€
O1021812	BW-RO-8040-UPL22	12000 /45,4 (GDP/m ³ /d)	99,3%	
O1021818	BW-RO-8040-LP22	10500 /39.7 (GDP/m ³ /d)	99,5%	

SW MEMBRANES

Code	Description	Permeate flow rate (gpd)/(m3/g)	Minimum rejection	€
O1021821	SW-RO-2521	300 /1,14 (GDP/m ³ /d)	99,7 %	
O1021822	SW-RO-2540	600 /2,27 (GDP/m ³ /d)	99,7 %	
O1021823	SW-RO-4021	800 /3,03 (GDP/m ³ /d)	99,7 %	
O1021824	SW-RO-4040 (85 ft2)	1800 /6,80 (GDP/m ³ /d)	99,6 %	

MEMBRANE FILMTEC

Code	Description	€
O1021707	TW30-1812-100	

ASPRING MEMBRANES

Code	Description	€
O1021703	Membrane TW30-1812-50	
O1021704	Membrane TW30-2012-100	
O1021701	Membrane NF 90-2012-180	
O1021727	NF90-3012-460 GPD* membrane	
O1021920	Membrane OI-TFC 3013 400 GPD x RO400-CR	

*Membrane tree D. 21 compatible with Vessel OI022002/2

14.2 GLASS FIBRE VESSELS FOR MEMBRANES

VESSEL FOR 2" 1/2" MEMBRANES

ROPV

300 PSI

Code	Description	€
FVR2514300	Pressure Vessel 1 item 2514	
FVR2521300	Pressure Vessel 1 item 2521	
FVR2540300	Pressure Vessel 1 element 2540	

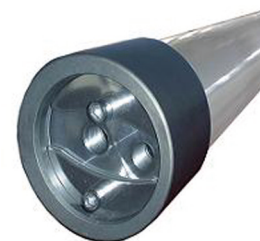
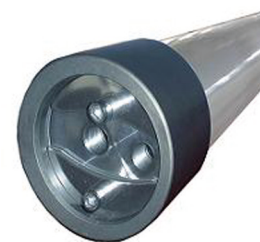
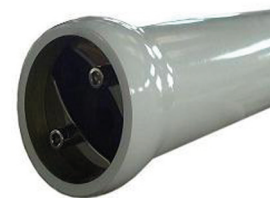
600 PSI

Code	Description	€
FVR2514600	Pressure Vessel 1 element 2514*	
FVR2521600	Pressure Vessel 1 element 2521*	
FVR2540600	Pressure Vessel 1 element 2540*	

Upon request

1000 PSI

Code	Description	€
FVR2514100	Pressure Vessel 1 item 2514	
FVR2521100	Pressure Vessel 1 item 2521	
FVR2540100	Pressure Vessel 1 element 2540	



14.0

RO - NF - UF membranes containers and accessories

4" END PORT MEMBRANE VESSEL

300 PSI

Code	Description	€
FVR4021A300	Pressure Vessel 1 element 4021 direct connection	
FVR4040A300	Pressure Vessel 1 element 4040 direct connection	
FVR4301E	Pressure Vessel 1 element 4040	
FVR4302E	Pressure Vessel 2 elements 4040	
FVR4303E	Pressure Vessel 3 elements 4040	
FVR4304E	Pressure Vessel 4 elements 4040	
FVR4305E	Pressure Vessel 5 elements 4040	



450 PSI

Code	Description	€
FVR4451E	Pressure Vessel 1 element 4040	
FVR4452E	Pressure Vessel 2 elements 4040	
FVR4453E	Pressure Vessel 3 elements 4040	
FVR4454E	Pressure Vessel 4 elements 4040	
FVR4455E	Pressure Vessel 5 elements 4040	



600 PSI

Code	Description	€
FVR4601E	Pressure Vessel 1 element 4040*	
FVR4602E	Pressure Vessel 2 elements 4040*	
FVR4603E	Pressure Vessel 3 elements 4040*	
FVR4604E	Pressure Vessel 4 elements 4040*	
FVR4605E	Pressure Vessel 5 elements 4040*	

Upon request



1000 PSI

Code	Description	€
FVR4021C1000	Pressure Vessel 1 element 4021	
FVR41001E	Pressure Vessel 1 element 4040	
FVR41002E	Pressure Vessel 2 elements 4040	
FVR41003E	Pressure Vessel 3 elements 4040	
FVR41004E	Pressure Vessel 4 elements 4040	
FVR41005E	Pressure Vessel 5 elements 4040	



1200 PSI

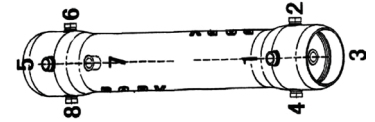
Code	Description	€
FVR41201E	Pressure Vessel 1 element 4040*	
FVR41202E	Pressure Vessel 2 elements 4040*	
FVR41203E	Pressure Vessel 3 elements 4040*	
FVR41204E	Pressure Vessel 4 elements 4040*	
FVR41205E	Pressure Vessel 5 elements 4040*	

Upon request



4" SIDE PORT MEMBRANES

Vessels supplied with standard doors in positions 1-5. Versions with connections in different positions are available on request.



300 PSI

Code	Description	€
FVR4301S	Pressure Vessel 1 element 4040	
FVR4301S17C	Pressure Vessel 1 element 4040 C1C7 - PP 1/2" Rc	
FVR4302S	Pressure Vessel 2 elements 4040	
FVR4302S17C	Pressure Vessel 2 elements 4040 C1C7 - PP 1/2" Rc	
FVR4303S	Pressure Vessel 3 elements 4040	
FVR4303S17C	Pressure Vessel 3 elements 4040 C1C7 - PP 1/2" Rc	
FVR4303S135C	Pressure Vessel 3 elements 4040 C1C3C5 - PP 1/2" Rc	
FVR4304S	Pressure Vessel 4 elements 4040	
FVR4305S	Pressure Vessel 5 elements 4040	



450 PSI

Code	Description	€
FVR4451S	Pressure Vessel 1 element 4040	
FVR4452S	Pressure Vessel 2 elements 4040	
FVR4453S	Pressure Vessel 3 elements 4040	
FVR4454S	Pressure Vessel 4 elements 4040	
FVR4455S	Pressure Vessel 5 elements 4040	



600 PSI

Code	Description	€
FVR4601S	Pressure Vessel 1 element 4040*	
FVR4602S	Pressure Vessel 2 elements 4040*	
FVR4603S	Pressure Vessel 3 elements 4040*	
FVR4604S	Pressure Vessel 4 elements 4040*	
FVR4605S	Pressure Vessel 5 elements 4040*	

Upon request

1000 PSI

Code	Description	€
FVR41001S	Pressure Vessel 1 element 4040	
FVR41002S	Pressure Vessel 2 elements 4040	
FVR41003S	Pressure Vessel 3 elements 4040	
FVR41004S	Pressure Vessel 4 elements 4040	
FVR41005S	Pressure Vessel 5 elements 4040	



1200 PSI

Code	Description	€
FVR41201S	Pressure Vessel 1 element 4040*	
FVR41202S	Pressure Vessel 2 elements 4040*	
FVR41203S	Pressure Vessel 3 elements 4040*	
FVR41204S	Pressure Vessel 4 elements 4040*	
FVR41205S	Pressure Vessel 5 elements 4040*	

Upon request



8" END PORT MEMBRANES

300 PSI

Code	Description	€
FVR8301E	Pressure Vessel 1 element 8040	
FVR8302E	Pressure Vessel 2 elements 8040	
FVR8303E	Pressure Vessel 3 elements 8040	
FVR8304E	Pressure Vessel 4 elements 8040	
FVR8305E	Pressure Vessel 5 elements 8040	
FVR8306E	Pressure Vessel 6 elements 8040	
FVR8307E	Pressure Vessel 7 elements 8040	
FVR8308E	Pressure Vessel 8 elements 8040	



450 PSI

Code	Description	€
FVR8451E	Pressure Vessel 1 element 8040	
FVR8452E	Pressure Vessel 2 elements 8040	
FVR8453E	Pressure Vessel 3 elements 8040	
FVR8454E	Pressure Vessel 4 elements 8040	
FVR8455E	Pressure Vessel 5 elements 8040	
FVR8456E	Pressure Vessel 6 elements 8040	
FVR8457E	Pressure Vessel 7 elements 8040	
FVR8458E	Pressure Vessel 8 elements 8040	



600 PSI

Code	Description	€
FVR8601E	Pressure Vessel 1 element 8040*	
FVR8602E	Pressure Vessel 2 elements 8040*	
FVR8603E	Pressure Vessel 3 elements 8040*	
FVR8604E	Pressure Vessel 4 elements 8040*	
FVR8605E	Pressure Vessel 5 elements 8040*	
FVR8606E	Pressure Vessel 6 elements 8040*	
FVR8607E	Pressure Vessel 7 elements 8040*	
FVR8608E	Pressure Vessel 8 elements 8040*	



Upon request

1000 PSI

Code	Description	€
FVR81001E	Pressure Vessel 1 element 8040	
FVR81002E	Pressure Vessel 2 elements 8040	
FVR81003E	Pressure Vessel 3 elements 8040	
FVR81004E	Pressure Vessel 4 elements 8040	
FVR81005E	Pressure Vessel 5 elements 8040	
FVR81006E	Pressure Vessel 6 elements 8040	
FVR81007E	Pressure Vessel 7 elements 8040	
FVR81008E	Pressure Vessel 8 elements 8040	



1200 PSI

Code	Description	€
FVR81201E	Pressure Vessel 1 element 8040*	
FVR81202E	Pressure Vessel 2 elements 8040*	
FVR81203E	Pressure Vessel 3 elements 8040*	
FVR81204E	Pressure Vessel 4 elements 8040*	
FVR81205E	Pressure Vessel 5 elements 8040*	
FVR81206E	Pressure Vessel 6 elements 8040*	
FVR81207E	Pressure Vessel 7 elements 8040*	
FVR81208E	Pressure Vessel 8 elements 8040*	



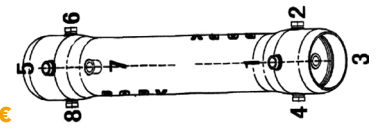
Upon request

8" SIDE PORT MEMBRANES

Vessels supplied with standard doors in positions 1-5. Versions with connections in different positions are available on request.

300 PSI

Code	Description	€
FVR8301S	Pressure Vessel 1 element 8040	
FVR8301S17D	Pressure Vessel 1 elements 8040 D1D7-PP1"/32 UA	
FVR8302S	Pressure Vessel 2 elements 8040	
FVR8303S	Pressure Vessel 3 elements 8040	
FVR8304S	Pressure Vessel 4 elements 8040	
FVR8305S	Pressure Vessel 5 elements 8040	
FVR8306S	Pressure Vessel 6 elements 8040	
FVR8307S	Pressure Vessel 7 elements 8040	
FVR8308S	Pressure Vessel 8 elements 8040	



450 PSI

Code	Description	€
FVR8451S	Pressure Vessel 1 element 8040	
FVR8451S17D	Pressure Vessel 1 element 8040 D1D7-PP1"/32 UA	
FVR8452S	Pressure Vessel 2 elements 8040	
FVR8452S17D	Pressure Vessel 2 elements 8040 D1D7-PP1"/32 UA	
FVR8453S	Pressure Vessel 3 elements 8040	
FVR8453S17E	Pressure Vessel 3 elements 8040 E1E7-PP1"/32 UA	
FVR8453S135E	Pressure Vessel 3 elements 8040 E1E3E5-PP1"/32 UA	
FVR8454S	Pressure Vessel 4 elements 8040	
FVR8454S17E	Pressure Vessel 4 elements 8040 E1E7-PP1"/32 UA	
FVR8454S135E	Pressure Vessel 4 elements 8040 E1E3E5-PP1"/32 UA	
FVR8455S	Pressure Vessel 5 elements 8040	
FVR8456S	Pressure Vessel 6 elements 8040	
FVR8457S	Pressure Vessel 7 elements 8040	
FVR8458S	Pressure Vessel 8 elements 8040	



600 PSI

Code	Description	€
FVR8601S	Pressure Vessel 1 element 8040*	
FVR8602S	Pressure Vessel 2 elements 8040*	
FVR8603S	Pressure Vessel 3 elements 8040*	
FVR8604S	Pressure Vessel 4 elements 8040*	
FVR8605S	Pressure Vessel 5 elements 8040*	
FVR8606S	Pressure Vessel 6 elements 8040*	
FVR8607S	Pressure Vessel 7 elements 8040*	
FVR8608S	Pressure Vessel 8 elements 8040*	



Upon request

1000 PSI

Code	Description	€
FVR81001S	Pressure Vessel 1 element 8040	
FVR81002S	Pressure Vessel 2 elements 8040	
FVR81003S	Pressure Vessel 3 elements 8040	
FVR81004S	Pressure Vessel 4 elements 8040	
FVR81005S	Pressure Vessel 5 elements 8040	
FVR81006S	Pressure Vessel 6 elements 8040	
FVR81007S	Pressure Vessel 7 elements 8040	
FVR81008S	Pressure Vessel 8 elements 8040	



1200 PSI

Code	Description	€
FVR81201S	Pressure Vessel 1 element 8040*	
FVR81202S	Pressure Vessel 2 elements 8040*	
FVR81203S	Pressure Vessel 3 elements 8040*	
FVR81204S	Pressure Vessel 4 elements 8040*	
FVR81205S	Pressure Vessel 5 elements 8040*	
FVR81206S	Pressure Vessel 6 elements 8040*	
FVR81207S	Pressure Vessel 7 elements 8040*	
FVR81208S	Pressure Vessel 8 elements 8040*	

Upon request



FIBREGLASS VESSEL ACCESSORIES

LOGS

Code	Description	€
OI022591	Grooved socket AISI 316 - 3/4" (26.7 x 45 mm)	
OI022588	Grooved socket AISI 316 - 1" (33.7 x 45 mm)	
OI022590	Grooved socket AISI 316 - 1"1/2 (48.3 x 60 mm)	
OI022592	Grooved socket AISI 316 - 2" (60.3 x 60 mm)	
OI022594	Grooved socket AISI 316 - 2"1/2 (73.0 x 90 mm)	
OI022593	Grooved socket AISI 316 - 3" (88.9 x 57 mm)	
OI022595	Grooved socket AISI 316 - 1"1/2 Thread. M (lg. 60 mm)	



GROOVED JOINTS 500 PSI

Code	Description	€
OI022650	Grooved Joint 1"-500 PSI Cast-Iron Vern. (33,7 mm)	
OI022651	Grooved Coupling 1"1/4-500 PSI Cast-Iron Vern. (42,4 mm)	
OI022652	Grooved Coupling 1"1/2-500 PSI Cast-Iron Vern. (48,3 mm)	
OI022653	Grooved Joint 2"-500 PSI Cast-Iron Vern. (60,3 mm)	
OI022655	Grooved Joint 3" OD-500 PSI Cast-Iron Vern. (76,1 mm)	
OI022656	Grooved Coupling 3"-500 PSI Cast-Iron Vern. (88,9 mm)	



VICTAULIC SPLINED JOINTS 1000 PSI

Code	Description	€
OI022640	Joint 1" Vict. 77-1000 PSI Cast-Iron Vern. (33,7 mm)	
OI022641	Joint 1"1/4 Vict. 77-1000 PSI Cast-Iron Vern. (42,4 mm)	
OI022642	Joint 1"1/2 Vict. 77-1000 PSI Cast-Iron Vern. (48,3 mm)	
OI022643	Joint 2" Vict. 77-1000 PSI Cast-Iron Vern. (60,3 mm)	
OI022644	Joint 2"1/2 Vict. 77-1000 PSI Cast-Iron Vern. (73,0 mm)	
OI0226441	Coupling 3" OD Vict.77-1000 PSI Cast-Iron Vern. (76,1 mm)	
OI022645	Joint 3" Vict. 77-1000 PSI Cast-Iron Vern. (88,9 mm)	



ORIGINAL
Code Description

€

FV25000	FRP Cap kit for 21/2" 300 psi 1/4" NPT vessel
FV25000/1	FRP Cap kit for vessel 21/2" 300 psi 1/4" Rc ISO 7/1
FV40046	FRP 4" D.C. vessel cap 300PSI 1/2" x 1/2 "Rc ISO 7/1
FV40048	FRP 4" vessel plug SP 300/450PSI Side-Port 1/2 "Rc ISO 7/1
FV40050/1	FRP 4" vessel cap EP 300/450PSI 3/4" x 1/2 "Rc ISO 7/1
FV40050	FRP 4" 300/450 psi vessel cap 3/4" x 1/2" NPT
FV40054	FRP O-ring large for cap 4" (90x5.3)
FV40056	FRP M/F adapter for 4" cap (4021)
FV40058	FRP Steel Segment Block 4" (4011)
FV40060	FRP O-ring small for cap 4" (17x2.65)
FV40062	FRP O-ring for M/F adapter for 4" cap (19x2.65)
FV40064	FRP Stainless steel band for vessel 4" (4008)
FV40066	FRP Screw M8x60 for tie rod
FV40068	FRP Saddle for vessel 4" -4010
FV40070	FRP T appo for vessel 4" 1000 psi (4068)
FV40072	FRP O-ring (28.5x3.55) for power connector 1000psi
FV40074	FRP Locking ring for power connector 1000psi -4039
FV40076	FRP Connector alim/conc(4038) vessel 4" 1000psi
FV40078	FRP Spacer blocking cap 4036 vessel 4" 1000psi
FV40080	FRP Aluminium collar 4036 for vessel 4" 1000psi
FV40082	FRP Aluminium Segment Cap Block 4" 1000psi - 4024
FV40084	FRP Permeate connector 4022 for vessel 4" 1000psi
FV40086	FRP T appo M12 for permeate connector 4013
FV40088	FRP Screw M6x10.3 for segment fixing
FV40090	FRP O-ring 25x2,65 for permeate connector
FV40092	FRP Stainless steel band for vessel 4" (4008.2)
FV40094	FRP Screw M6x25 for vessel plug fixing 4" 1000psi
FV800050	Saddle and tie rod kit for vessel VTR 8"
FV800054	FRP O-Ring per Vessel Ropv 190*5.3
FV800055	FRP O-Ring per Vessel Ropv 36.5*3.55
FV800058	FRP O-Ring per Vessel Ropv 47.5*3.55
FV800063	FRP O-Ring per Vessel Ropv 23.6*2.65
FV800071	FRP O-Ring per Vessel Ropv 58*2.65
FV800082	Permeate Plug A8006 1" NPT M for End & Side Version
FV800084	Permeate Union Adapter Kit 1" BS & Metric Style
FV800110	Thrust Ring A8011.2
FV800112	Thrust Ring A8011.4
FV800619	Thrust Ring A8011.1
FV800620	Thrust Ring side port 600-1000-1200 A8011.3
FV800010	8" diaphragm adapter type HYDRANAUTICS - 1.125"
FV800011	8" diaphragm adapter type BW30LE440 - 1.5"
FV800618	Diaphragm adapter 8" type 1.125" SW A8012.3
FV800012	GE-type 8" diaphragm adapter - 1.187"
FV800014	Membrane adapter 8" blind type - 1.125"
FV8000E	Complete 8" ROPV 300 psi end port cap kit
FV80001S	Complete 8" ROPV 300 psi side port cap kit
FV8001E	Vessel cap kit 8" ROPV 450 psi end port complete
FV80002S	Vessel cap kit 8" ROPV 450 psi side port complete
FV8003E	Complete 8" ROPV 1000 psi end port cap kit
FV80004S	Complete 8" ROPV 1000 psi side port cap kit

140

RO - NF - UF membranes containers and accessories

14.3 AISI 316L MEMBRANE VESSEL 2 1/2" MEMBRANES

250 PSI MOPLEN CAPS

Code	Description	€
OIO22600	Stainless steel vessel for membranes 2514	
OIO22610	Stainless steel vessel for membranes 2521	
OIO22620	Stainless steel vessel for membranes 2540	

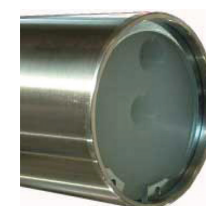


Code	no. Elements	length (L) mm	Ø mm	Attacks in	Connections concentrate	Connections permeate
OIO22600	1	405	70	1/4" BSP F	1/4" BSP F	1/4" BSP F
OIO22610	1	585	70	1/4" BSP F	1/4" BSP F	1/4" BSP F
OIO22620	1	1070	70	1/4" BSP F	1/4" BSP F	1/4" BSP F

4" MEMBRANES

250 PSI MOPLEN CAPS

Code	Description	€
OIO22110	Stainless steel vessel for membranes 4021	
OIO22120	1-element stainless steel vessel for membranes 4040	
OIO22130	2-element stainless steel vessel for membranes 4040	
OIO22140	3-element stainless steel vessel for membranes 4040	
OIO22150	4-element stainless steel vessel for membranes 4040	
OIO22160	5-element stainless steel vessel for membranes 4040	



Code	no. Elements	length (L) mm	Ø mm	Attacks in	Connections concentrate	Connections permeate
OIO22110	1	640	106	1/2" BSP F	1/2" BSP F	1/2" BSP F
OIO22120	1	1085	106	1/2" BSP F	3/8" BSP F	1/2" BSP F
OIO22130	2	2105	106	1/2" BSP F	3/8" BSP F	1/2" BSP F
OIO22140	3	3125	106	1/2" BSP F	3/8" BSP F	1/2" BSP F
OIO22150	4	4140	106	1/2" BSP F	3/8" BSP F	1/2" BSP F
OIO22160	5	5155	106	1/2" BSP F	3/8" BSP F	1/2" BSP F

250 PSI WITH CLAMP AND MOULDED PLUGS

Code	Description	€
OIO22165	Stainless steel vessel for membranes 4021	
OIO22170	1-element stainless steel vessel for membranes 4040	
OIO22180	2-element stainless steel vessel for membranes 4040	



Code	no. Elements	length (L) mm	Ø mm	Attacks in	Connections concentrate	Connections permeate
OIO22165	1	640	106	1/2" BSP F	1/2" BSP F	1/2" BSP F
OIO22170	1	1085	106	1/2" BSP F	1/2" BSP F	1/2" BSP F
OIO22180	2	2105	106	1/2" BSP F	1/2" BSP F	1/2" BSP F

600 PSI WITH AISI 316L CAPS

Code	Description	€
OIO22109	1-element stainless steel vessel for membranes 4021	
OIO22220	1-element stainless steel vessel for membranes 4040	
OIO22230	2-element stainless steel vessel for membranes 4040	
OIO22240	3-element stainless steel vessel for membranes 4040	



Code	no. Elements	length (L) mm	Ø mm	Attacks in	Connections concentrate	Connections permeate
OIO22109	1	605	106	1/2" BSP F	1/2" BSP F	1/2" BSP F
OIO22220	1	1088	106	1/2" BSP F	1/2" BSP F	1/2" BSP F
OIO22230	2	2105	106	1/2" BSP F	1/2" BSP F	1/2" BSP F
OIO22240	3	3122	106	1/2" BSP F	1/2" BSP F	1/2" BSP F

1000 PSI SIDE PORT 180° VICTAULIC

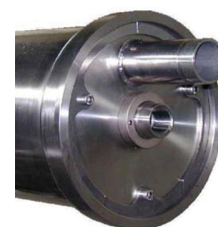
Code	Description	€
OIO22320	1-element stainless steel vessel for membranes 4040	
OIO22330	2-element stainless steel vessel for membranes 4040	
OIO22340	3-element stainless steel vessel for membranes 4040	



Code	no. Elements	Length L mm	Connections concentrate	Connections permeate
OIO22320	1	1150	3/4" Vict.	3/4" Vict.
OIO22330	2	2167	3/4" Vict.	3/4" Vict.
OIO22340	3	3183	3/4" Vict.	3/4" Vict.

400 PSI END PORT VICTAULIC 1" 1/2

Code	Description	€
OIO22420	1-element stainless steel vessel for membranes 8040	
OIO22430	2-element stainless steel vessel for membranes 8040	
OIO22440	3-element stainless steel vessel for membranes 8040	
OIO22450	4-element stainless steel vessel for membranes 8040	
OIO22460	5-element stainless steel vessel for membranes 8040	
OIO22470	6-element stainless steel vessel for membranes 8040	



Code	no. Elements	Length L mm	Connections concentrate	Connections permeate
OIO22420	1	1190	1" 1/2 Vict.	1" 1/2 Vict.
OIO22430	2	2210	1" 1/2 Vict.	1" 1/2 Vict.
OIO22440	3	3230	1" 1/2 Vict.	1" 1/2 Vict.
OIO22450	4	4240	1" 1/2 Vict.	1" 1/2 Vict.
OIO22460	5	5260	1" 1/2 Vict.	1" 1/2 Vict.
OIO22470	6	6275	1" 1/2 Vict.	1" 1/2 Vict.

400 PSI SIDE PORT VICTAULIC 1" 1/2

Code	Description	€
OIO22520	1-element stainless steel vessel for membranes 8040	
OIO22530	2-element stainless steel vessel for membranes 8040	
OIO22540	3-element stainless steel vessel for membranes 8040	
OIO22550	4-element stainless steel vessel for membranes 8040	
OIO22560	5-element stainless steel vessel for membranes 8040	
OIO22570	6-element stainless steel vessel for membranes 8040	



Code	no. Elements	Length L mm	Connections concentrate	Connections permeate
OIO22520	1	1360	1" 1/2 Vict.	1" 1/2 Vict.
OIO22530	2	2375	1" 1/2 Vict.	1" 1/2 Vict.
OIO22540	3	3393	1" 1/2 Vict.	1" 1/2 Vict.
OIO22550	4	4415	1" 1/2 Vict.	1" 1/2 Vict.
OIO22560	5	5430	1" 1/2 Vict.	1" 1/2 Vict.
OIO22570	6	6450	1" 1/2 Vict.	1" 1/2 Vict.

14.0

RO - NF - UF membranes containers and accessories

VESSEL SPARE PARTS FOR VESSEL 2" 1/2

Code	Description	€
OIO22111	Plug 2"1/2 PP complete with o-ring 1 hole	
OIO22112	Plug 2"1/2 PP complete with o-ring 2 holes	
OIO22113	O-ring 162 for cap 2"1/2	
OIO22114	O-ring 3075 permeate for cap 2"1/2	
OIO22115	Seeger Dacromet 2"1/2	

FOR VESSEL 4"

Code	Description	€
OIO22118	Plug 4" 1 hole for vessel PVC 4003	
OIO22119	Plug 4" 2 holes for vessel PVC 4004	
OIO22121	Plug 4" PP complete with o-ring 1 hole	
OIO22122	Plug 4" PP complete with o-ring 2 holes	
OIO22123	O-ring 6362 for 4" cap	
OIO22124	O-ring 3075 permeated for 4" cap	
OIO22125	Seeger Dacromet 4"	
OIO22126	Saddle and tie rod kit for 4" vessels	
OIO22127	Filmtec PP membrane cap adapter for vessel 4" 1000 PSI	
OIO22128	Filmtec PP interconnector	
OIO22129	Stainless steel spiral ring 4"	
OIO22131	Stainless steel sections 4"	
OIO22132	M8x16 screws for 4" stainless steel sectors	
OIO22146	4" stainless steel cap complete with o-ring 1 hole	
OIO22147	4" stainless steel cap complete with 2-hole o-ring	

FOR VESSEL 8"

Code	Description	€
OIO22133	Saddle and tie rod kit for vessel 8"	
OIO22134	Locking sector kit for vessel 8"	
OIO22135	M8x16 screws for 8" stainless steel sectors	
OIO22136	Filmtec PP membrane cap adapter for vessel 8"	
OIO22137	PP extension for vessel 8" side port	
OIO22138	PVC contrast ring for vessel 8" end port	
OIO22139	Steel contrast ring for vessel 8" side port	
OIO22141	O-ring 235 for 8" cap	
OIO22142	O-ring 4131 permeate for 8" cap	
OIO22143	O-ring 4125 for BW LE diaphragm cap adapter	
OIO22144	O-ring 132 for BW 400 diaphragm cap adapter	
OIO22145	8" stainless steel cap complete with o-ring	

14.4 PLASTIC MEMBRANE VESSELS

PLASTIC VESSEL

FOR MEMBRANES 1812 150 PSI

SOLD IN PACKS OF 20

Code	Description	€
OI022000	Vessel plastic container for membrane 1812 150 PSI	



FOR MEMBRANES 3012

Code	Description	€
OI022002/2	Vessel container 150 PSI plastic for membrane 3012 ASPRING	



OI021830	Adapter Ø21 x Ø17 for 3" membrane shank	
----------	---	--



FOR MEMBRANES 3208 & 3308

Code	Description	€
OI022005	Vessel plastic container Ametec 10" Blue 3/4 for membrane N/F N3208	



